

OSU 300



Product Features

- Multiport OSU (Optical Service Unit)
- Single and multi-mode fiber optics
- For distances up to 40 km on single-mode fiber and 2 km on multi-mode fiber
- Four user-configurable data ports
- Built-in HSSI (High Speed Serial Interface)
- Optional HSSI module
- Optional high-speed V.35 interface options
- Optional Quad DSX-1 module for voice integration
- Automatic or manual remote configuration
- Embedded SNMP and Telnet via Ethernet or SLIP/PPP
- Detailed performance monitoring (local and remote)
- VT100 menu structure simplifies configuration
- DC powered with optional AC adapter available
- Standard 5-year warranty

Multiport Optical Service Unit

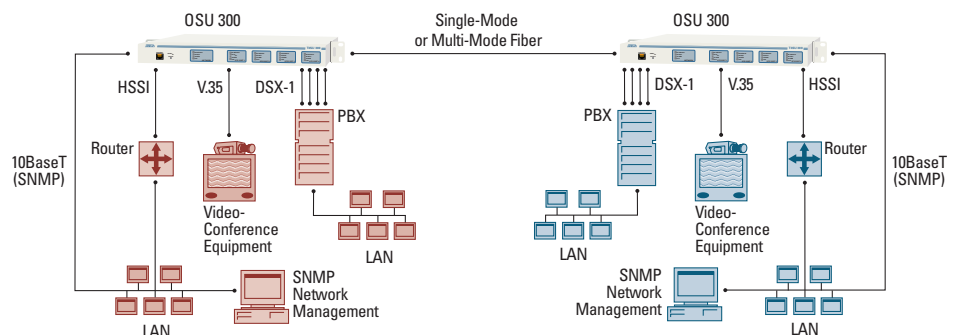
The ADTRAN OSU 300 is a point-to-point fiber product that supports data rates up to 44.2 Mbps, providing users up to four DTE data ports. This multiport OSU provides access to private single-mode and multi-mode fiber and allows users to share the bandwidth between multiple applications. The single-mode version has a 1310 nm laser with SC type connectors and a maximum range of 40km, while the multi-mode version has a 1310 nm LED, a maximum range of 2km and ST type connectors.

The OSU 300 has one HSSI (High Speed Serial Interface) port built into the chassis. Expansion slots for up to three additional DTE interfaces accept optional field-upgradeable interface modules. The modules can be either HSSI, high-speed V.35, or DSX-1. The HSSI ports support rates from 75 Kbps to 44.2 Mbps, while the high-speed V.35 ports support rates from 75 Kbps to 10 Mbps; both in 75 Kbps increments. Each DSX module has four DSX-1 interfaces and up to three DSX-1 modules can be supported in a chassis. The OSU 300 offers complete configuration, diagnostic, and performance monitoring through a VT100 terminal, SNMP, or Telnet.

A series of front panel LEDs indicate the status of the network connection, along with the state of each of the four DTE ports. SNMP traps notify SNMP management platforms of alarm conditions. External alarm contacts provide connection to a visual or audible alarm.

The OSU 300 includes VT100 terminal interfaces on both front and rear panels. Inband remote configuration to a remote unit across the fiber can be performed manually by the user, or automatically by the host OSU 300 unit. Time-of-day automatic reconfiguration allows customers to assign or reallocate bandwidth to applications based on the time of day, ensuring that the broadband circuit is always optimized.

Embedded SNMP and Telnet are available via either the 10BaseT Ethernet port or SLIP/PPP. The OSU 300 can be configured, monitored, and diagnosed using standard SNMP network management programs, such as Hewlett Packard's OpenView™, IBM's NetView™, and Cabletron's Spectrum™. ADTRAN's ADVISION™, a GUI interface for HP OpenView, can be used to manage the OSU 300, as well as other ADTRAN SNMP products.



ADTRAN, Inc.

Attn: Enterprise Networks
901 Explorer Boulevard
Huntsville, AL 35806

P.O. Box 140000
Huntsville, AL 35814-4000

256 963-8000 voice
256 963-8699 fax
256 963-8200 fax back

General Information

800 9ADTRAN
info@adtran.com
www.adtran.com

Pre-Sales

Technical Support

800 615-1176 toll-free
application.engineer@adtran.com
www.adtran.com/support

Where to Buy

877 280-8416 toll-free
channel.sales@adtran.com
www.adtran.com/where2buy

Post-Sales Technical Support

888 423-8726
support@adtran.com
www.adtran.com/support

ACES Installation & Maintenance Service

888 874-ACES
aces@adtran.com
www.adtran.com/support

International Inquiries

256 963 8000 voice
256 963-6300 fax
international@adtran.com
www.adtran.com/international

For the regional office nearest you, visit:

www.adtran.com/where2buy



I.S. EN ISO 9001
ADTRAN is a
ISO 9001 registered company.



TL 9000
ADTRAN is a
TL 9000 registered company.

Printed in the U.S.A.

61200663L1-8C July 2002

©2002 ADTRAN, Inc. All rights reserved.

Multiport Optical Service Unit

Product Specifications

OSU 300 Interface

Single-mode Interface

- Class 1 single-mode laser
- 1310 nm
- Up to 40 km on single-mode fiber
- SC connectors
- **Transmitter output power:** -3 dBm
- **Receiver sensitivity:** -36 dBm

Multi-mode Interface

- 1310 nm
- Up to 2 km on multi-mode fiber
- ST connectors

DTE Interface(s)

- Built-in integrated HSSI port, SCSI-II 50-pin female
- Three (3) option slots accept any combination of:

HSSI Port(s): Rate: 75 Kbps to 44.2 Mbps, SCSI-II 50-pin female

V.35 Port(s): M34 female, Rate: 75 Kbps to 10 Mbps

DSX-1 Interface: T1/FT1 rates, RJ48C, ANSI T1.403, AT&T TR 62411, SF/ESFAMI/B8ZS

- Bandwidth selectable in 75 Kbps increments
- All option cards are hot swappable

VT100 Terminal Interface

- RJ-48, EIA-232 compatible, female DB-9 adapter provided
- Inband remote configuration and statistics

Clocking

- Loop (slaved to network receive clock)
- Local (private network master)

Diagnostics

- ANSI T1.107 compatible loopbacks
- Line and payload loopbacks
- Built-in BERT
- Remote loopbacks

Agency Approvals

- FCC Part 15, Class A, UL and CUL

Performance Monitoring

Local and Remote Network Port Statistics

- Current 15-minute, 24-hour (96 15-minute intervals) and total for 24 hours
- P-bit errored and severely errored seconds
- Severely errored framing seconds
- Line, P-bit, C-bit coding violations
- Line errored, unavailable seconds
- C-bit errored and severely errored seconds
- F-bit and M-bit errors
- Far-end block errors
- Percent availability

SNMP/Telnet

- Integrated 10BaseT Ethernet and SLIP/PPP (async) port
- MIB II, RFC 1213 & 1407 compliant
- ADTRAN Enterprise MIB for extended monitoring and DSU control/configuration

Environment

- Operating Temperature: 0° to 50° C, (32° to 122° F)
- Storage Temperature: -20° to 70° C, (-4° to 158° F)
- Relative Humidity: Up to 95%, non-condensing

Physical

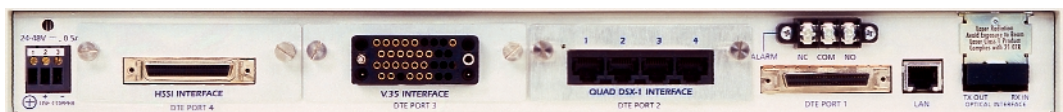
- Dimensions: 1.7" H, 11.625" D, 17" W; fits 1U 19" rack
- Weight: 5 lbs
- Power: 120 vAC or 24-48 vDC, 9 watts

Product Includes

- One 8-pin to 8-pin modular cable, modular-to-female DB-9 adapter, user manual
- 19" rackmount kit

Ordering Information

Equipment	Part #
OSU 300 DC, Single-mode, SC	1200663L1
OSU 300 DC, Multi-mode, ST	1200663L4
OSU 300 AC, Single-mode, SC	4200663L1
OSU 300 AC, Multi-mode, ST	4200663L4
HSSI Module	1200218L1
V.35 Module	1200219L1
Quad DSX-1 Module	1200284L1
23" Rackmount Kit	1200171L1
AC to 48 Volt DC Converter	1200470L1



Specifications subject to change without notice. ADTRAN is a trademark of ADTRAN, Inc. All registered trademarks and trademarks mentioned in this publication are the property of their respective owners.