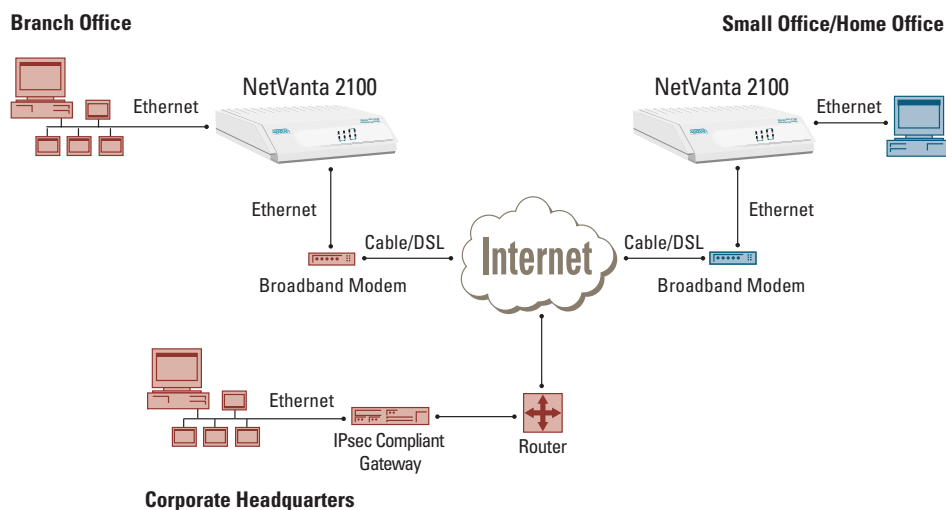


Internet Security

Remote VPN

Featuring
NetVanta™ 2100



The ADTRAN® NetVanta 2100 provides all the necessary components required to secure an integrated VPN solution. It protects the corporate network against attacks with its built-in stateful inspection firewall and provides data security through encryption, authentication, and key exchange. In the application depicted above, the NetVanta 2100 can be used to connect branch offices, small offices/home offices (SOHO), and business partners to a corporate environment using an industry standard Internet Protocol Security (IPSec) compliant gateway.

The NetVanta 2100 encrypts the data being sent out onto the network using either the DES (Data Encryption Standard) or 3DES encryption algorithm. MD5 or SHA1 is used to maintain data integrity as it is transported across the public infrastructure. In addition, Internet Key Exchange (IKE) can be used for user authentication supporting public and private keys or digital certificates, assuring that the proper VPN tunnel is established and that the tunnel has not been redirected or compromised.

Independent of the Internet service being provided, the NetVanta 2100 resides between the LAN and broadband modem and can connect a single workstation or an entire LAN onto the corporate network. A router can be used in conjunction with the NetVanta 2100, or its internal router can be used for routing IP traffic in small office applications. The NetVanta 2100 can also hide the IP address of workstations from the public Internet by performing Network Address Translation (NAT). In addition, the NetVanta 2100 provides a comprehensive stateful inspection firewall solution that protects an organization's internal network from intruders, denial of service attackers, backdoor entries onto corporate networks, and other assaults.

With the NetVanta 2100, companies can reduce the recurring wide-area network cost of traditional private networks, improve data security, increase network performance and availability, and simplify overall network operations.

SOLUTION FEATURES

- IPSec gateway interoperability
- IPSec VPN tunneling with DES/3DES encryption
- Internet Key Exchange (IKE) for user authentication
- Stateful inspection firewall security
- Internal router
- Network Address Translation
- Logging and alerts
- Web-based management
- 10/100BaseT Ethernet interface for flexible connectivity

ADTRAN



- WAN: RJ-45 10/100 Auto-Sensing Ethernet interface
- LAN: RJ45 10/100 Auto-Sensing Ethernet interface
- Serial port for off-net configuration

PRODUCT SPECIFICATIONS

FIREWALL

- Stateful inspection firewall
- Application content filtering
- Cyber assault protection
- HTTP relay

ADDRESS TRANSLATION

- Basic NAT (1:1)
- NAT (Many:1)
- Reverse NAT (translation of an inbound session's destination IP address)

IPSEC TUNNEL

- Encapsulating Security Payload (ESP)
- Authentication Header (AH)
- Manual key management or automatic key management using Internet Key Exchange (IKE)
- X.509 certificate support
- MD5-HMAC 128-bit authentication algorithm
- SHA1-HMAC 160-bit authentication algorithm
- DES-CBC 56-bit encryption
- 3DES-CBC 168-bit encryption

DIAGNOSTICS

Front Panel Status LEDs

- Power
- VPN - enabled, transmit, receive
- LAN - transmit, receive
- WAN - transmit, receive

ADMINISTRATION

- Web-based management
- SYSLOG logging in WELF format
- Email alerts (SMTP)
- User and group access control policies based on time-of-day
- User accounting policy statistics

DHCP

- Server (to manage IP addresses on local network)
- Client (to acquire the WAN-side IP address from service provider)

ROUTING

- TCP/IP
- Static routes
- RIP

ENVIRONMENT

Operating Temperature

- 0° to 50°C (32° to 122 °F)

Storage Temperature

- -20° to 70°C (-4° to 158 °F)

Relative Humidity

- Up to 95%, non-condensing

PHYSICAL

Size

- 1.625" H, 9.0" W, 6.375" D

Weight

- 2 lbs (shipping weight)

Power

- 12 VDC Power
- 4 W

AGENCY APPROVALS

- FCC Part 15 (Class B)
- UL 1950, 3rd Edition

PRODUCT INCLUDES

- Manual
- 12 VDC power supply
- 6 ft. crossover Ethernet cable

For More Information

www.adtran.com

ADTRAN, Inc.
901 Explorer Blvd.
Huntsville, AL 35806

General Information
800 9ADTRAN
info@adtran.com

Applications Engineering (Pre-Sale)
800 615-1176

