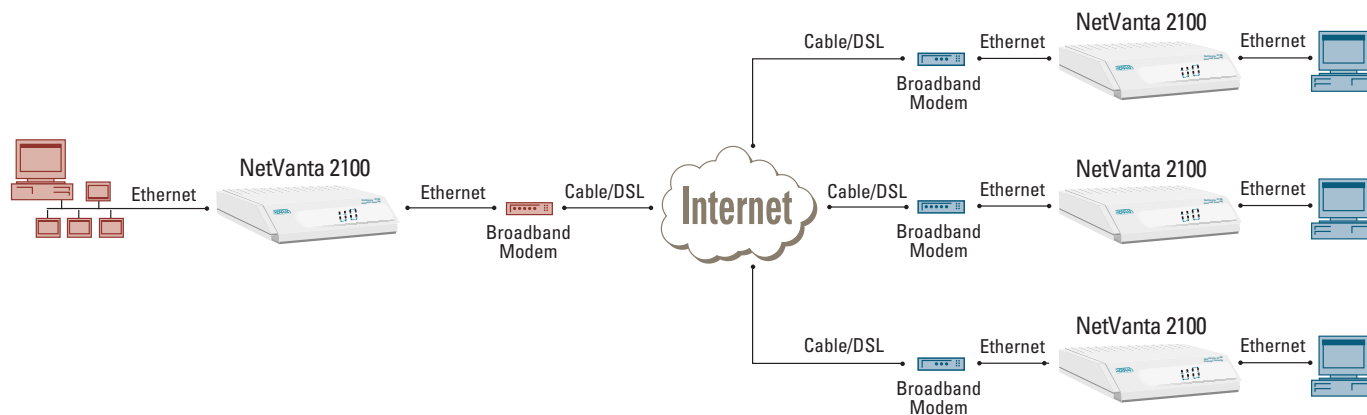


# Internet Security

## Site-to-Multisite VPN

Featuring  
NetVanta™ 2100



If your WAN requirements call for remote network connectivity, but your requirements don't call for a dedicated circuit, the ADTRAN® NetVanta 2100 is right for you. The NetVanta 2100 is a small-office gateway that can be deployed as a remote VPN solution or as its own VPN gateway supporting up to 10 private encryption tunnels.

The NetVanta 2100 can protect the corporate network against attacks with a built-in stateful inspection firewall and provides data security through encryption, authentication and key exchange. The NetVanta 2100 provides a comprehensive firewall solution that protects an organization's internal network from intruders, denial of service attackers, backdoor entries onto corporate networks, and other assaults. Sitting between the LAN and broadband modem, the NetVanta 2100's Ethernet interfaces make for fast and flexible connectivity, independent of the Internet service being provided. As the illustration indicates, the NetVanta 2100 is used for site-to-multisite connectivity, targeting corporate branch office, the small office/home office (SOHO), and even business-to-business applications.

The NetVanta 2100 also encrypts data being sent out onto the network based on DES (Data Encryption Standard) or 3DES. MD5 or SHA1 is used to maintain data integrity as it is transported across the public infrastructure. In addition, Internet Key Exchange (IKE) can be used for user authentication supporting public and private keys or digital certificates, assuring that the proper VPN tunnel is established and that the tunnel has not been redirected or compromised.

The NetVanta 2100 also hides the IP address of workstations from the public Internet by performing Network Address Translation (NAT). The internal router allows multiple users to share a VPN connection and can also direct incoming IP traffic.

From a management perspective, the remote NetVanta 2100 can easily and effectively be managed using a standard web browser. NetVanta 2100 has built-in alert and logging mechanisms using protocols such as SMTP and POP3 for messaging and mail services.

With the NetVanta 2100, companies can reduce the recurring wide-area network cost of traditional private networks, improve data security, increase network performance and availability, and simplify overall network operations.

## SOLUTION FEATURES

- Small-office gateway
- IPSec VPN tunneling with DES/3DES encryption
- Internet Key Exchange (IKE) for user authentication
- Stateful inspection firewall security
- Internal router
- Network Address Translation
- Logging and alerts
- Web-based management
- 10/100BaseT Ethernet interface for flexible connectivity
- Supports up to 10 communication tunnels



- WAN: RJ-45 10/100 Auto-Sensing Ethernet interface
- LAN: RJ45 10/100 Auto-Sensing Ethernet interface
- Serial port for off-net configuration

## PRODUCT SPECIFICATIONS

### FIREWALL

- Stateful inspection firewall
- Application content filtering
- Cyber assault protection
- HTTP relay

### ADDRESS TRANSLATION

- Basic NAT (1:1)
- NAPT (Many:1)
- Reverse NAT (translation of an inbound session's destination IP address)

### IPSEC TUNNEL

- Encapsulating Security Payload (ESP)
- Authentication Header (AH)
- Manual key management or automatic key management using Internet Key Exchange (IKE)
- X.509 certificate support
- MD5-HMAC 128-bit authentication algorithm
- SHA1-HMAC 160-bit authentication algorithm
- DES-CBC 56-bit encryption
- 3DES-CBC 168-bit encryption

### DIAGNOSTICS

#### Front Panel Status LEDs

- Power
- VPN - enabled, transmit, receive
- LAN - transmit, receive
- WAN - transmit, receive

### ADMINISTRATION

- Web-based management
- SYSLOG logging in WELF format
- Email alerts (SMTP)
- User and group access control policies based on time-of-day
- User accounting policy statistics

#### DHCP

- Server (to manage IP addresses on local network)
- Client (to acquire the WAN-side IP address from service provider)

### ROUTING

- TCP/IP
- Static routes
- RIP

### ENVIRONMENT

#### Operating Temperature

- 0° to 50°C (32° to 122 °F)

#### Storage Temperature

- -20° to 70°C (-4° to 158 °F)

#### Relative Humidity

- Up to 95%, non-condensing

### PHYSICAL

#### Size

- 1.625" H, 9.0" W, 6.375" D

#### Weight

- 2 lbs (shipping weight)

#### Power

- 12 VDC Power
- 4 W

### AGENCY APPROVALS

- FCC Part 15 (Class B)
- UL 1950, 3rd Edition

### PRODUCT INCLUDES

- Manual
- 12 VDC power supply
- 6 ft. crossover Ethernet cable

## For More Information

[www.adtran.com](http://www.adtran.com)

ADTRAN, Inc.  
901 Explorer Blvd.  
Huntsville, AL 35806

General Information  
800 9ADTRAN  
[info@adtran.com](mailto:info@adtran.com)

Applications Engineering (Pre-Sale)  
800 615-1176

